



# DUESSEL-STAPLER

DUESSEL-STAPLER Helmuth Poensgen/strong>  
Owner: Helmuth Poensgen  
An der Leimkuhle 19  
40625 Dusseldorf  
Germany

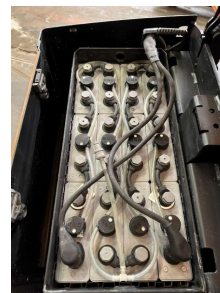
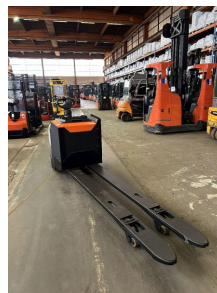
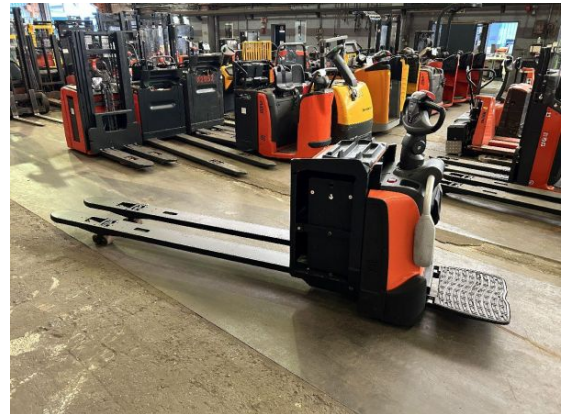
Phone: +49 1522 9858711  
Fax: +49 211 54 47 35 92

Email: [info@duessel-stapler.de](mailto:info@duessel-stapler.de)  
Internet: [duessel-stapler.de](http://duessel-stapler.de)

## Toyota - LPE 220 - 2,2t/Kommissionierer/Bj.- Batter.2021

Preis auf  
Anfrage

Offer Nr.:	HPR0061
Manufacturer:	Toyota
Model:	LPE 220
YoC:	2021
Seriennr.:	... 819491
Operating Hours <sup>h</sup> :	2,635 h
Lifting capacity:	2,200 kg
Construction height:	1,560 mm
Forks:	Länge 2,300 mm
Engine type:	Electric
Type of construction:	Low-level order picker
Mast type:	None
Additional equipment:	Platform - foldable
Technical Condition:	excellent
Condition (visual):	excellent
UVV (Technical Inspection):	current
Tyres:	Polyurethane
Battery:	Bj. 2021 24 Volt 325 Ah
Dead weight:	997 kg



Ready to use. Shipping can be arranged at your request. Sold as seen without any warranty. Please make an arrangement for evaluation prior to order.

\* All prices are quoted net of the statutory value-added tax from our warehouse in Duesseldorf, if not described otherwise. Errors and omissions excepted. All items subject to prior sale. Offer and sales exclusively to business customers as set forth in § 14 BGB.

(<sup>h</sup>) Operating hours quoted as read from the counters, errors excepted.

Date printed: 31.12.2025